

Toll Free: 800-761-7264  
Fax: 855-855-7681  
<http://www.vestamodular.com>  
info@vestamodular.com



## 66' x 168' Classroom

### Building Details:

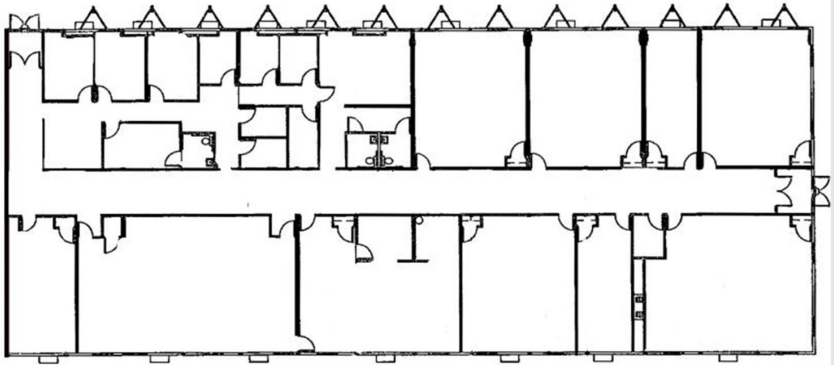
Asset #: CR00049B  
Building Size: 66.00ft. x 168.00ft.  
Square Footage: 11,088 Sq. ft.  
Occupancy: Education  
Roof Load: 45psf  
Wind Load: 90mph  
Floor Load: 50psf  
Electrical: 3-Phase / 200 AMP Panel / 120/208 Volts

### Exterior Details:

Siding Material: Smart Panel  
Roof Material: .45 EPDM  
Frame: Perimeter  
Doors: (2) Double  
Windows: (23) Horizontal Slide  
HVAC: (8) 2.5 Ton, (7) 3 Ton, (2) 4 Ton with 15kw heat strip

### Interior Details:

Wall Finish: VCG  
Floor Finish: VCT  
Lighting: Fluorescent  
Ceiling: T-Grid



\*\*This building is subject to availability. The details provided are for informational purposes only and are not guaranteed. For detailed specifications, drawings and pricing contact your local representative.



**VESTA**  
M O D U L A R

**ASSET AVAILABLE  
LEASE NOW**