

Toll Free: 800-761-7264
Fax: 855-855-7681
<http://www.vestamodular.com>
info@vestamodular.com



24' x 32' Classroom

Asking Price \$4,608

Building Details:

Asset #: CR00028
State Seal: NC
Building Size: 24 x 32
Square Footage: 768
Occupancy: E - Education
Roof Load: 20 PSF
Wind Load: 110 MPH
Floor Load: 40 PSF
Electrical: Single Phase / 100 AMP Panel /
120/240 Volts

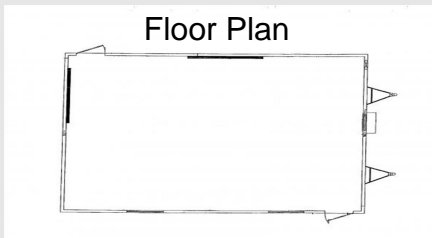
Exterior Details:

Siding Material: .019 Aluminum
Roofing Material: 30 Gauge Galvanized Metal
Frame: Outrigger
Doors: (2) Single
Windows: (1)
HVAC: (1) 3 Ton / 10 kw Heat Strip

Interior Details:

Wall Finish: Vinyl Covered Gypsum
Floor Finish: Tile
Lighting: Fluorescent
Ceiling: T-Grid

Floor Plan



**This building is subject to availability. The details provided are for informational purposes only and are not guaranteed. For detailed specifications, drawings and pricing contact your local representative.