

Toll Free: 800-761-7264
Fax: 855-855-7681
<http://www.vestamodular.com>
info@vestamodular.com



24' x 60' Classroom

Building Details:

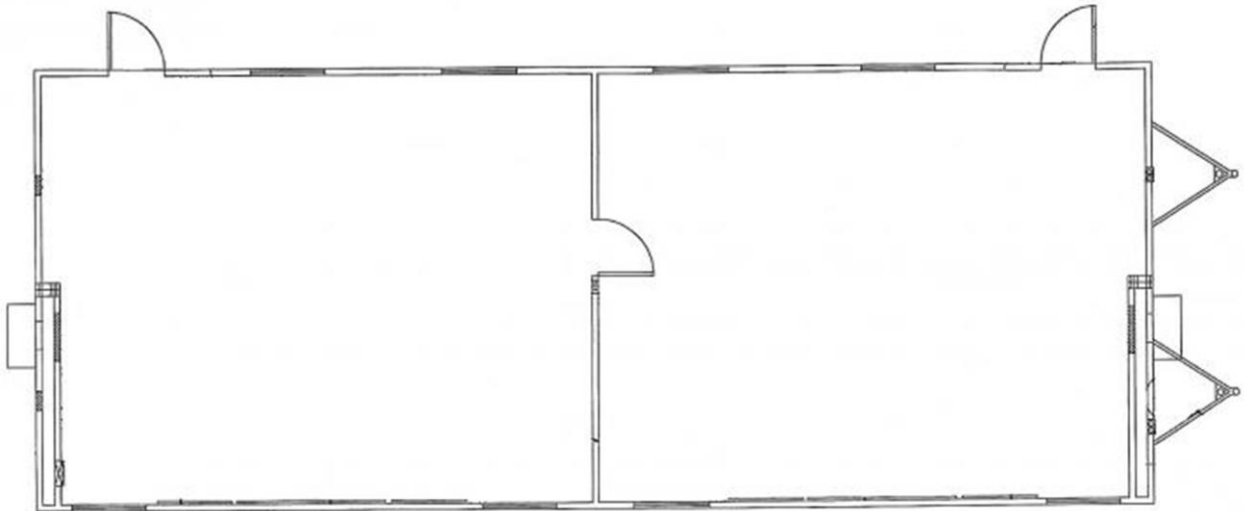
Asset #: CR00350
State Seal: OH
Building Size: 24 x 60
Square Footage: 1,440
Occupancy: E - Education
Roof Load: 30 PSF
Wind Load: 90 MPH
Floor Load: 40 PSF
Electrical: Single Phase / 200 AMP / 120/240 Volts

Exterior Details:

Siding Material: 8" Groove Sierra Hardi-Panel
Roofing Material: .045 EPDM
Frame: Outrigger
Doors: (2) Single
Windows: 8
HVAC: (2) 3 Ton / 15 kw Heat Strip

Interior Details:

Wall Finish: Vinyl Wrap Gypsum Board
Floor Finish: Vinyl Tile
Lighting: Fluorescent
Ceiling: Hard (Popcorn)



**This building is subject to availability. The details provided are for informational purposes only and are not guaranteed. For detailed specifications, drawings and pricing contact your local representative.