

Toll Free: 800-761-7264  
Fax: 855-855-7681  
<http://www.vestamodular.com>  
[info@vestamodular.com](mailto:info@vestamodular.com)



## 24' x 70' Classroom

### Building Details:

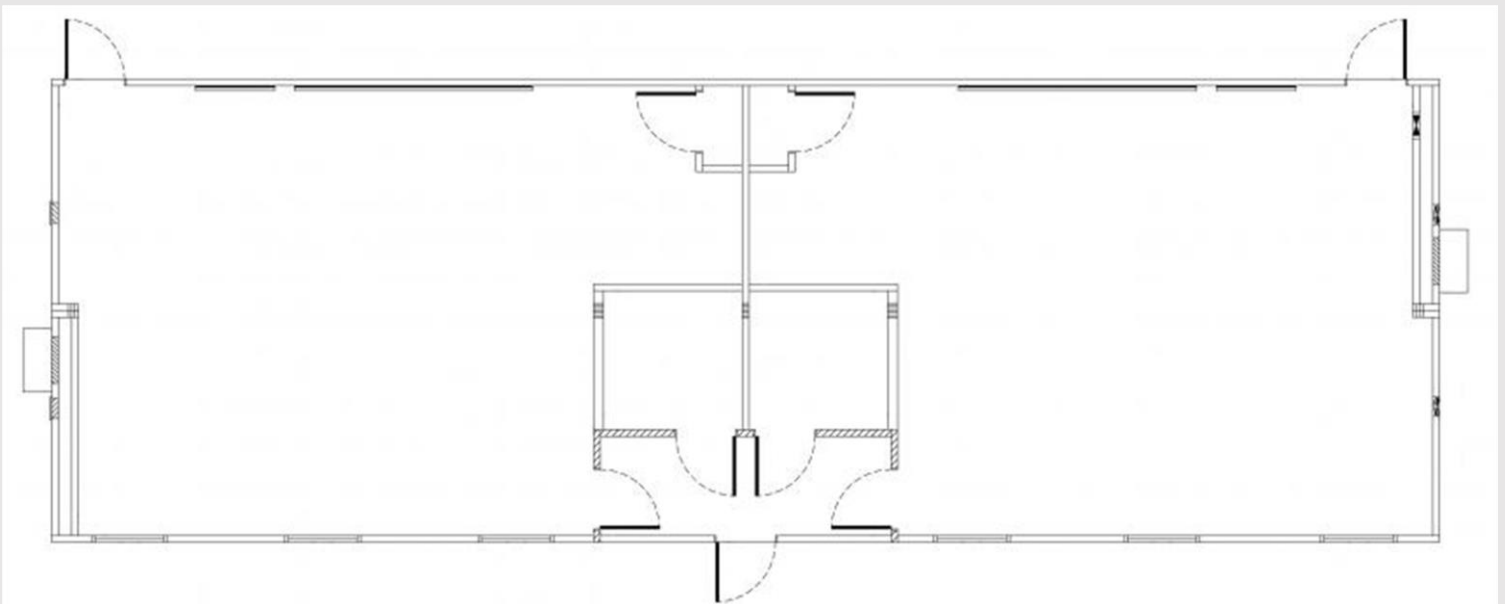
Asset #: CR00463 - 470  
State Seal: IL  
Building Size: 24 x 70  
Square Footage: 1680  
Occupancy: E - Educational  
Roof Load: 20 PSF  
Wind Load: 110 MPH  
Floor Load: 40 PSF  
Electrical: Single Phase / 225 AMP Panel / 120/240  
Volts

### Exterior Details:

Siding Material: Hardi-Panel  
Roofing Material: .045 EPDM  
Frame: Outrigger  
Doors: (3) Single  
Windows: 6  
HVAC: (2) 3 Ton / 15kw Heat Strip

### Interior Details:

Wall Finish: Vinyl Covered Gypsum  
Floor Finish: Tile  
Lighting: Fluorescent  
Ceiling: Hard (Seaspray)  
Restrooms: (2) ADA



\*\*This building is subject to availability. The details provided are for informational purposes only and are not guaranteed. For detailed specifications, drawings and pricing contact your local representative.