

Toll Free: 800-761-7264
Fax: 855-855-7681
<http://www.vestamodular.com>
info@vestamodular.com



Classroom Complex

Asking Price \$40,000

Building Details:

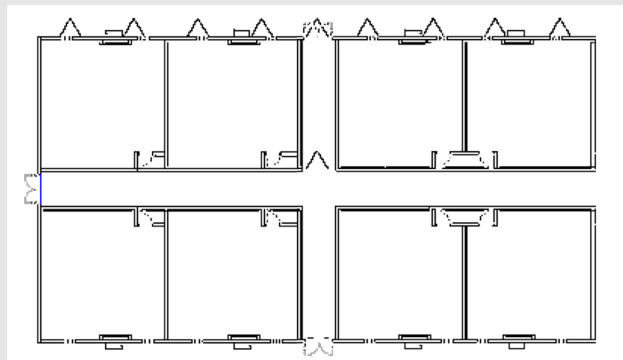
Asset #: CR00471
State Seal: CT
Building Size: (8) 14 x 66, (2) 8 x 37.5 (floors remaining from larger complex)
Square Footage: 7992
Occupancy: E - Education
Roof Load: 30 PSF
Wind Load: 110 MPH
Floor Load: 50 PSF Classroom, 100 PSF Corridor
Electrical: Single Phase / 150 AMP Panel / 120/240 Volts

Exterior Details:

Siding Material: T1-11
Roofing Material: .045 EPDM
Frame: Perimeter
Doors: (3) Double
Windows: 48 x 48 Horizontal Slide
HVAC: (10) 3 Ton / 15 kw Heat Strip

Interior Details:

Wall Finish: Vinyl Covered Gypsum
Floor Finish: Vinyl Tile
Lighting: Fluorescent Lay-in
Ceiling: T-Grid



**This building is subject to availability. The details provided are for informational purposes only and are not guaranteed. For detailed specifications, drawings and pricing contact your local representative.