

Toll Free: 800-761-7264
Fax: 855-855-7681
<http://www.vestamodular.com>
info@vestamodular.com



24' x 32' Office

Building Details:

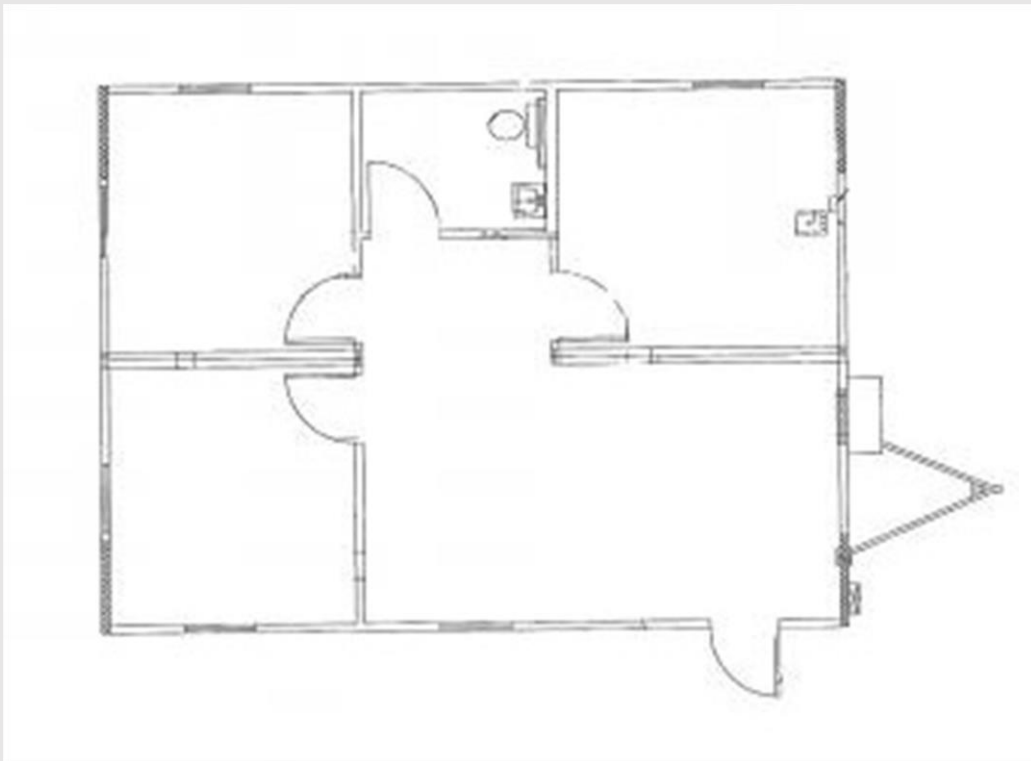
Asset #: MO00182
Storage: Rayne, LA
Building Size: 24.00ft. x 32.00ft.
Square Footage: 768 Sq. ft.
Occupancy: Business
Roof Load: 20psf
Wind Load: 130mph
Floor Load: 50psf
Electrical: Single Phase / 125 AMP Panel / 120/240 Volts

Exterior Details:

Siding Material: PBR Panel
Roof Material: High Rib Steel
Frame: Outrigger
Doors: (1) Single
Windows: (6) Vertical Slide
HVAC: (1) 3 Ton with 10 kw Heat Strip

Interior Details:

Wall Finish: VCG
Floor Finish: VCT
Lighting: Fluorescent
Ceiling: T-Grid



**This building is subject to availability. The details provided are for informational purposes only and are not guaranteed. For detailed specifications, drawings and pricing contact your local representative.