

Toll Free: 800-761-7264
Fax: 855-855-7681
<http://www.vestamodular.com>
info@vestamodular.com



20' x 48' Modular Office

Building Details:

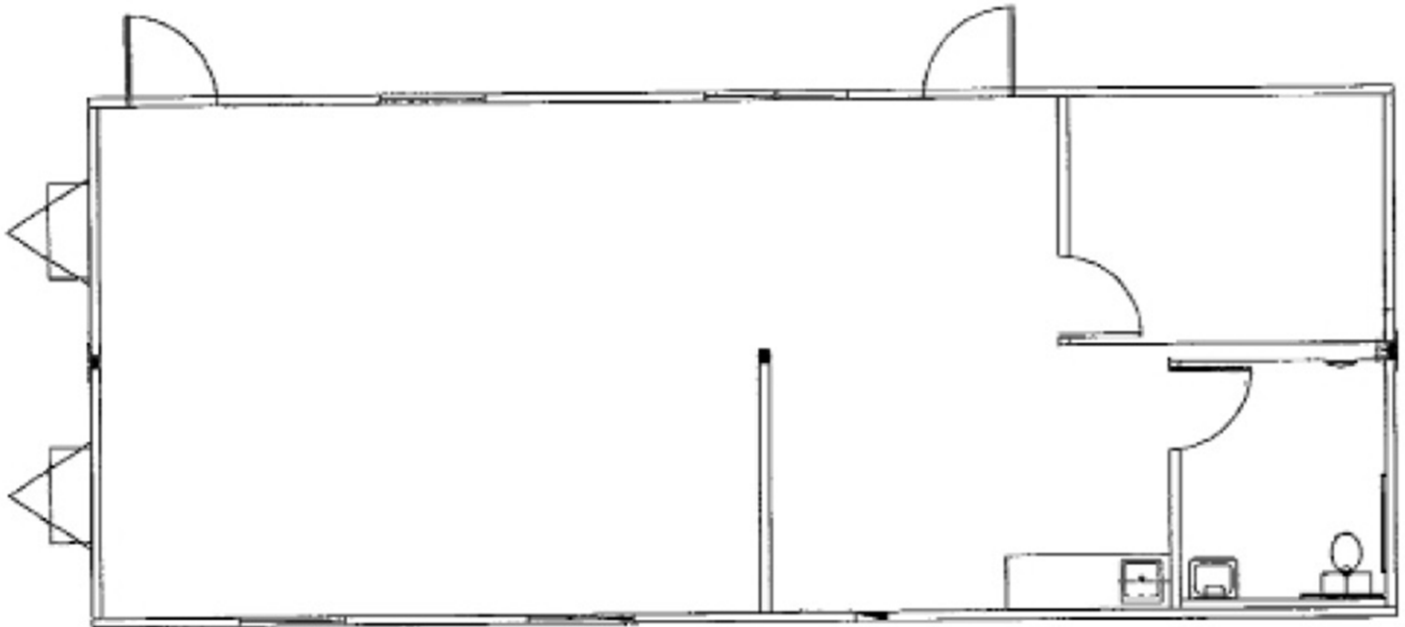
Asset #: MO00072-73
Building Size: 20 x 48
Square Footage: 960
Occupancy: B- Business
Roof Load: 20 PSF
Wind Load: 130 MPH
Floor Load: 50 PSF
Electrical: Single Phase/ 150 AMP/ 120/240 Volts

Exterior Details:

Siding Material: LP Smart Panel
Roofing Material: .045 EPDM
Frame: Outrigger
Doors: (2) Single
Windows: 5
HVAC: (2) 2 Ton/ 5 kw Heat Strip

Interior Details:

Wall Finish: Vinyl Covered Gypsum
Floor Finish: Vinyl Covered Tile
Lighting: Fluorescent
Ceiling: T- Grid
Restroom: (1) Single Stall



**This building is subject to availability. The details provided are for informational purposes only and are not guaranteed. For detailed specifications, drawings and pricing contact your local representative.